



GreenGrowRooms™



SLIP PANEL WALL INSTALLATION



+1 (833) 400 - GROW



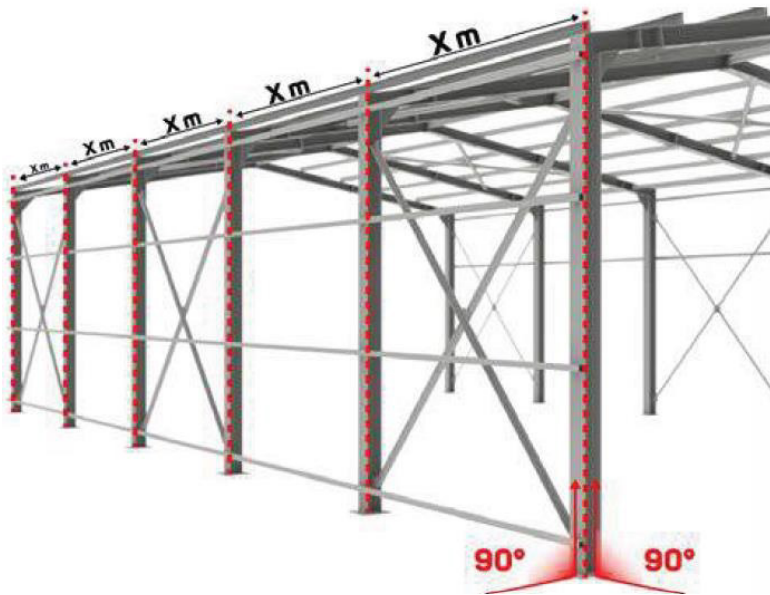
support@greengrowrooms.com



8339 Hoyle ave Dallas, TX. 75227



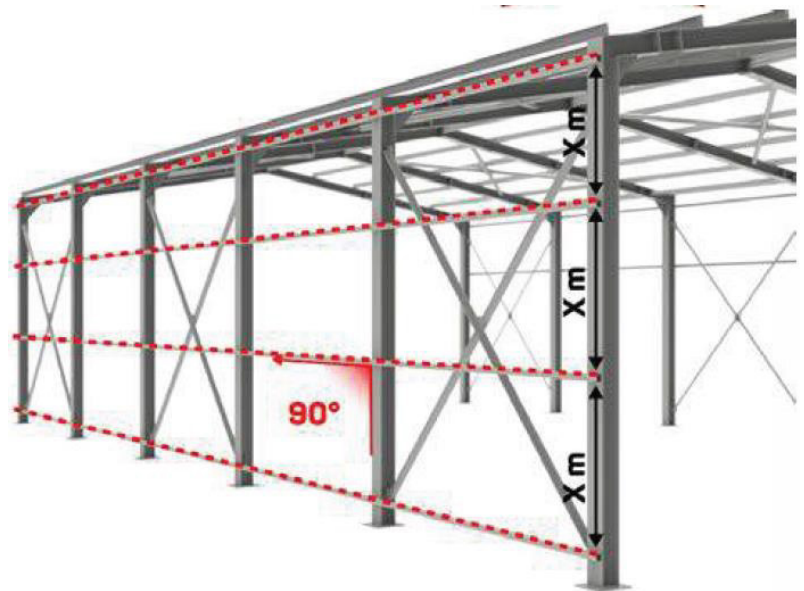
GreenGrowRooms™

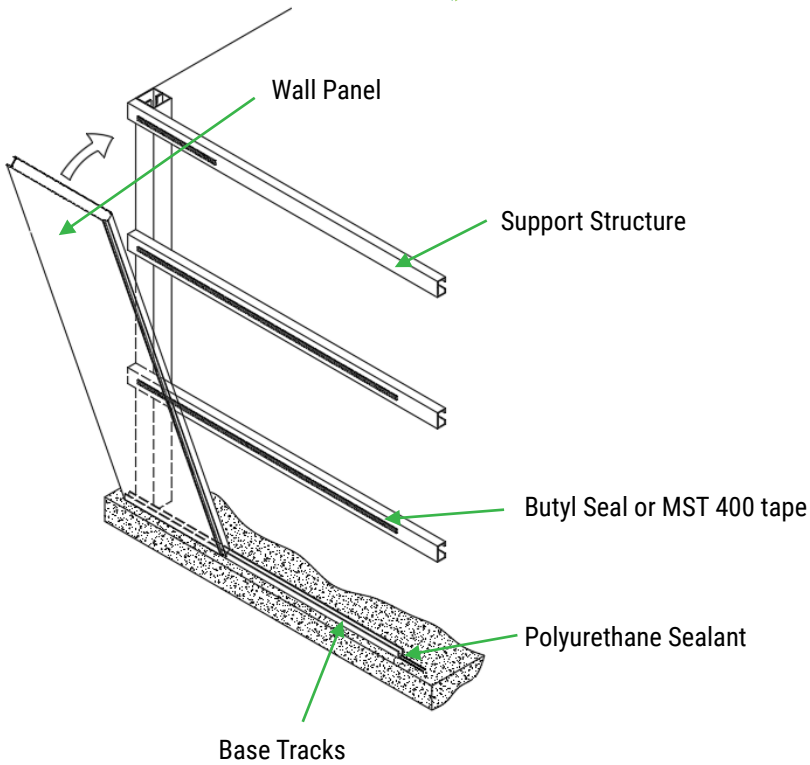


Before installation of the panels, it is necessary to check the alignment of the structure where the panel in use will be fixed, due to the possibility that the panel will adopt the irregularities that may exist in the structure.



In case of spacings between the “support structure”, the structural calculation should be reviewed to determine the spacing between these elements.



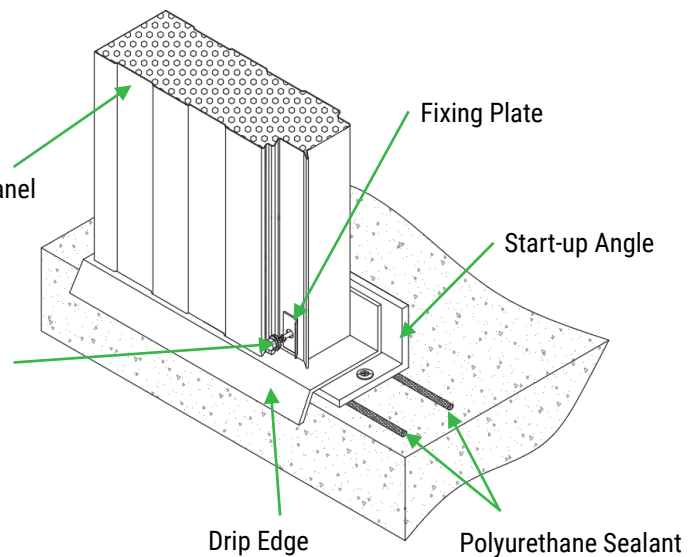
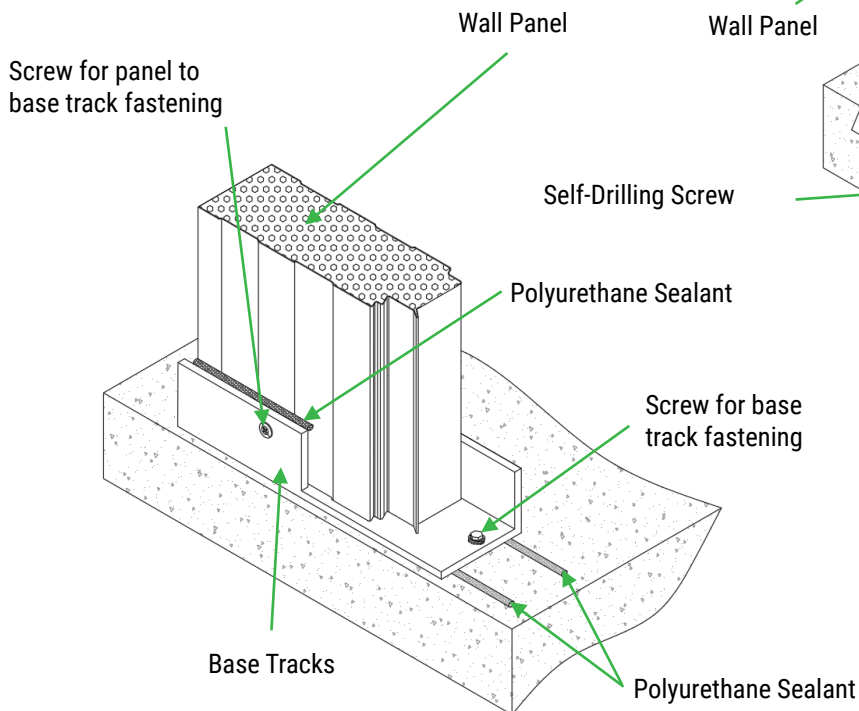


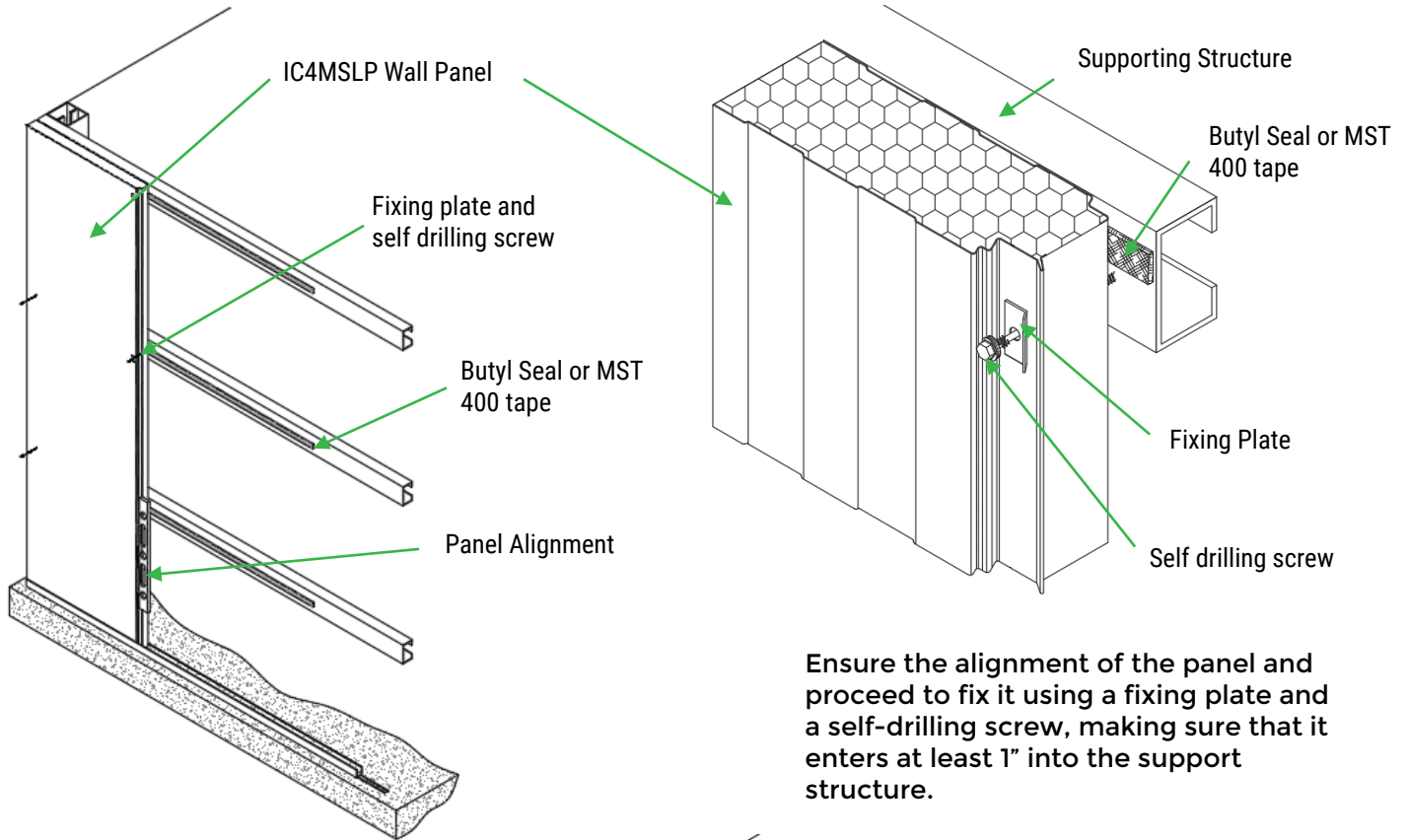
To begin with the installation of the panel, a 24-gauge base track should be installed.

To fix the base track, apply the polyurethane sealant between the track and floor to achieve a watertight seal at the joint.

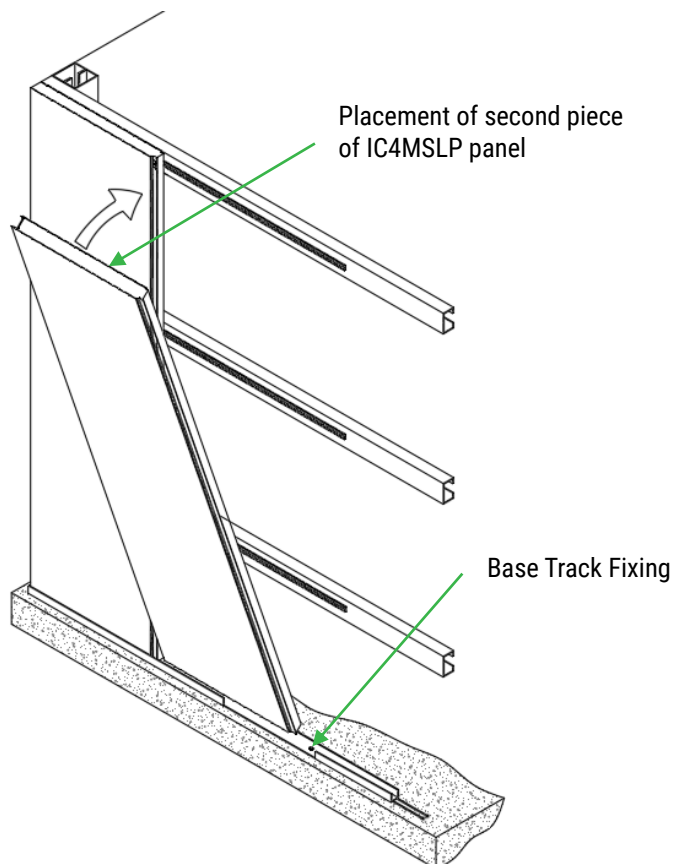
It is suggested to place a butyl cord or MST 400 tape.

Once the base track is fixed, the first panel should be installed.



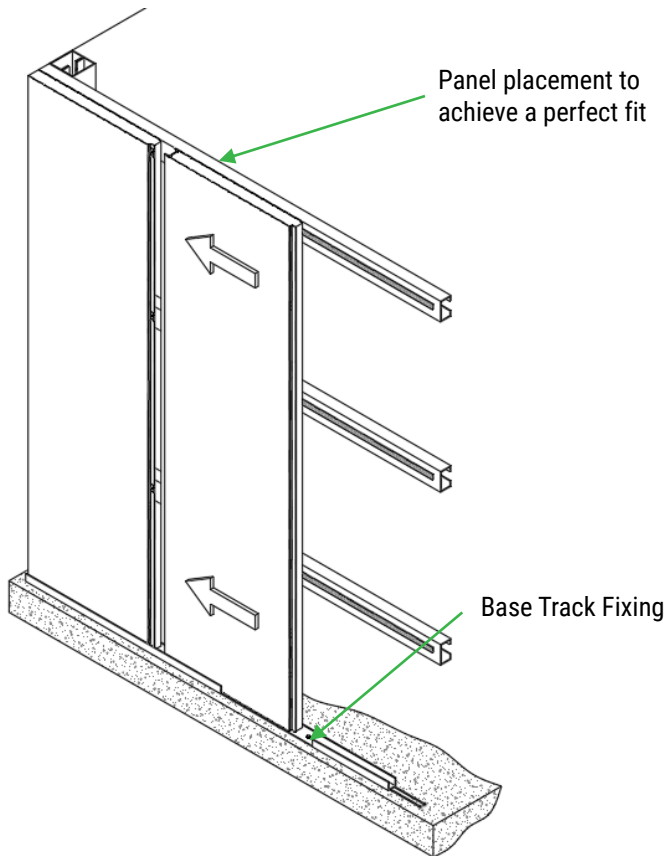


Once the first panel has been aligned and secured, the second piece of the panel is placed.

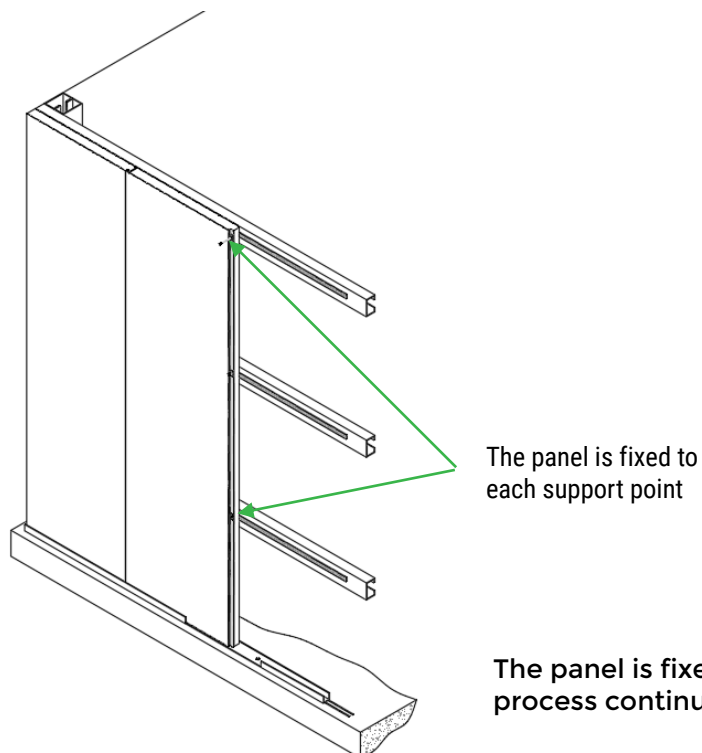




GreenGrowRooms™



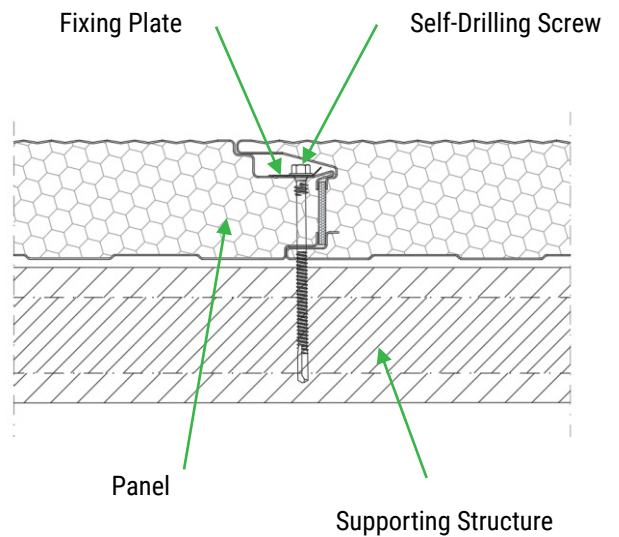
Once the panel is in place, proceed to push it in the direction of the other panel to achieve an airtight seal and fit between the two pieces.

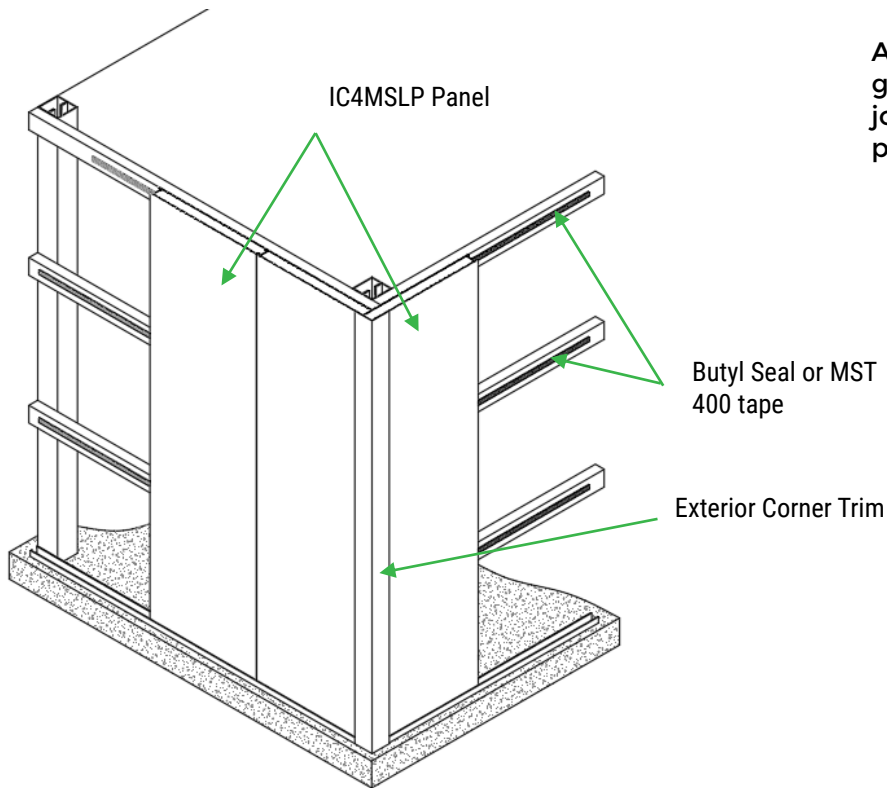


The panel is fixed, and the installation process continues.

PANEL FIXING DETAIL

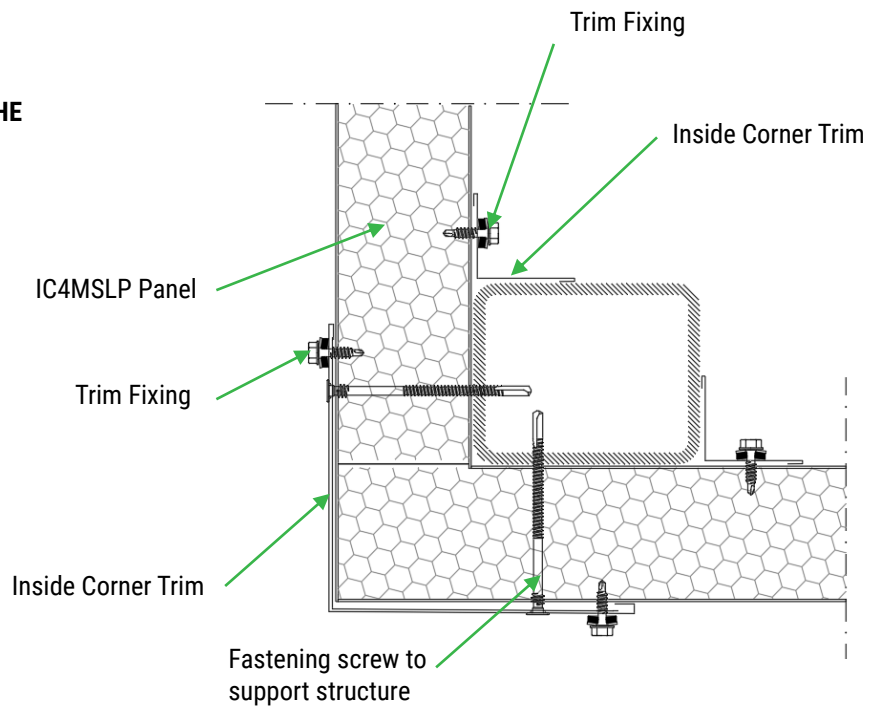
Top View





At the outside corners, place a 24 gauge pinto sheet trim to cover the joint and prevent exposure of the foam panels.

DETAIL OF TRIM PLACEMENT OUTSIDE THE CORNER / INSIDE THE CORNER

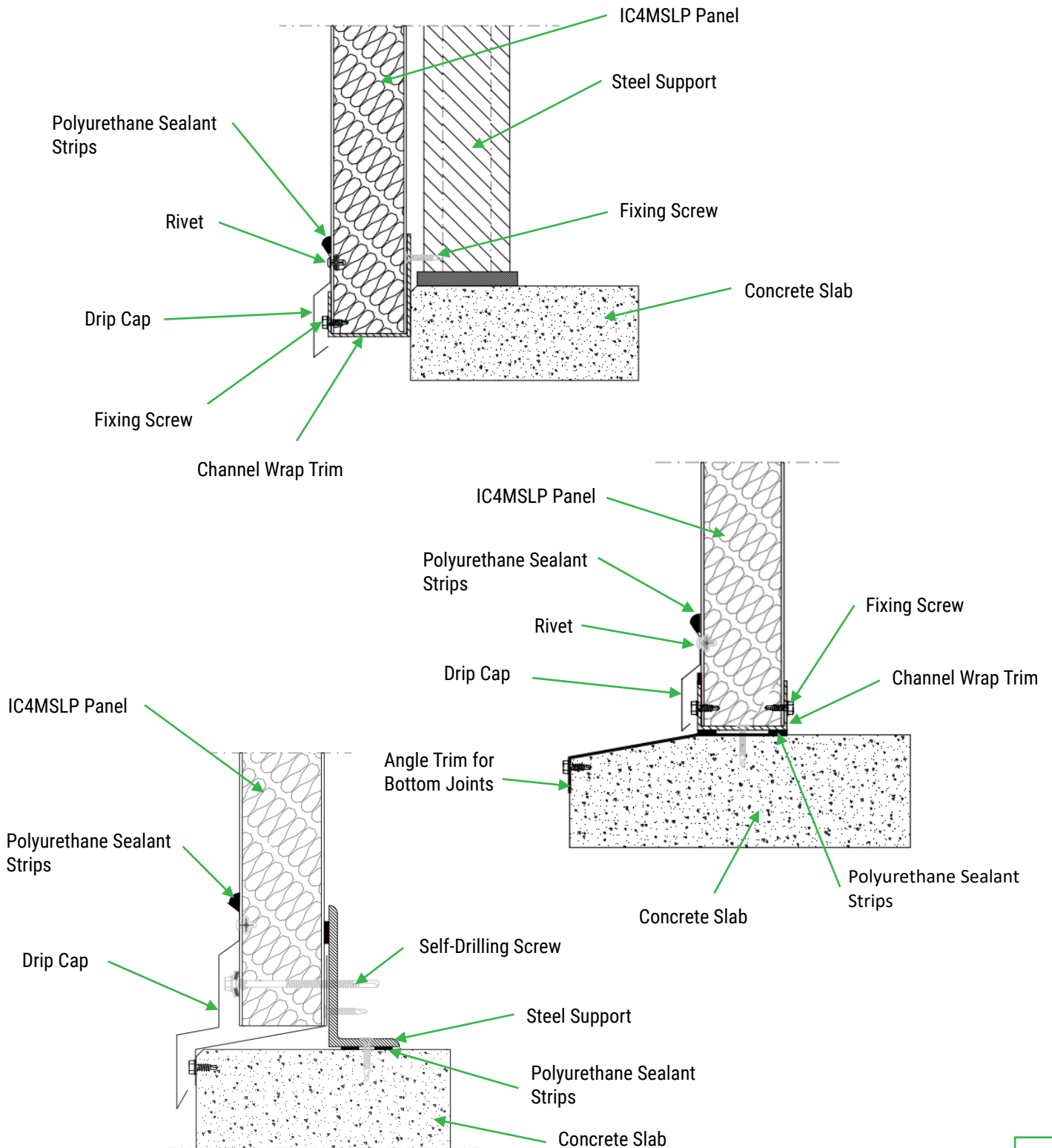


The panel is cut at each corner in order to have a better joint and tightness between the panels.

GENERAL DETAILS

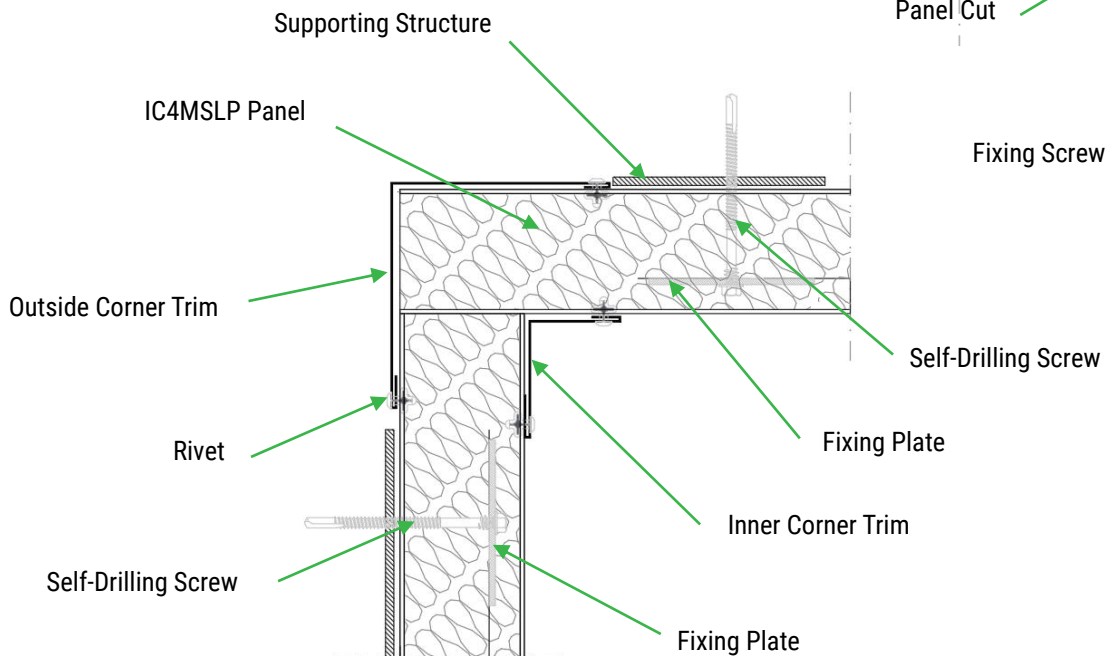
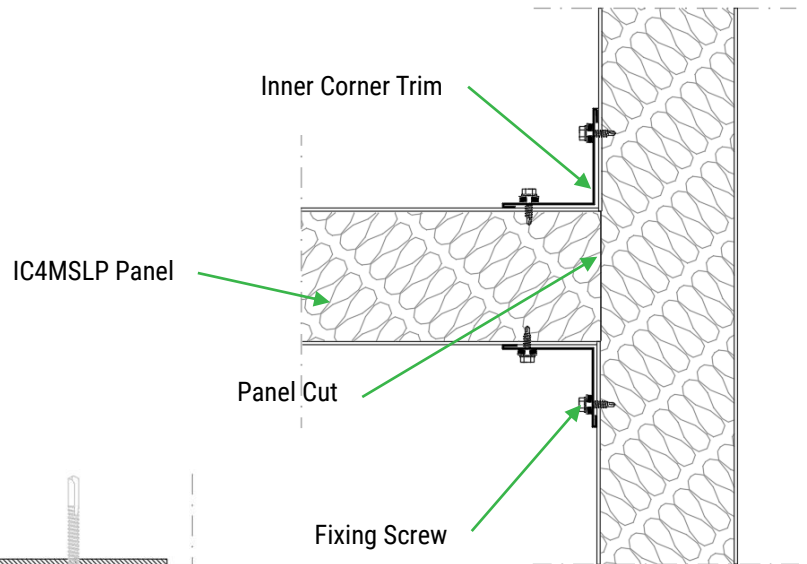
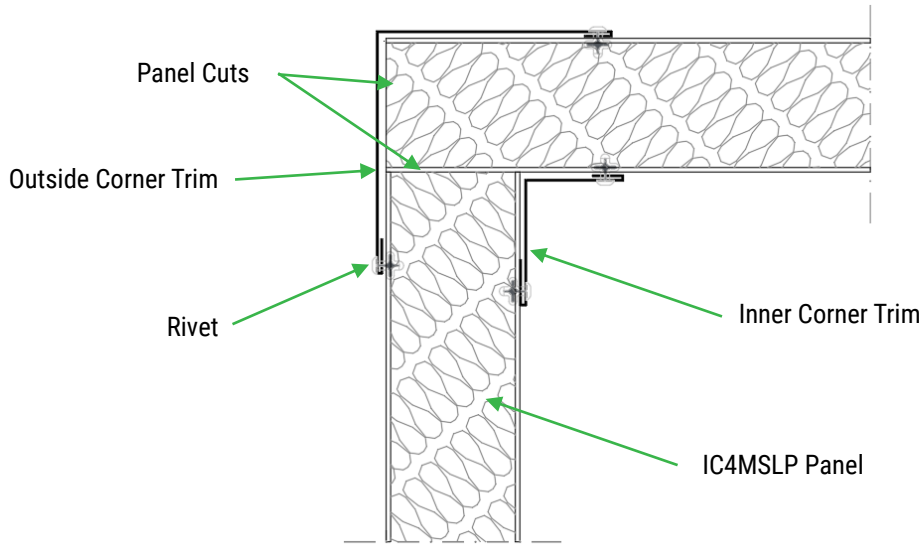


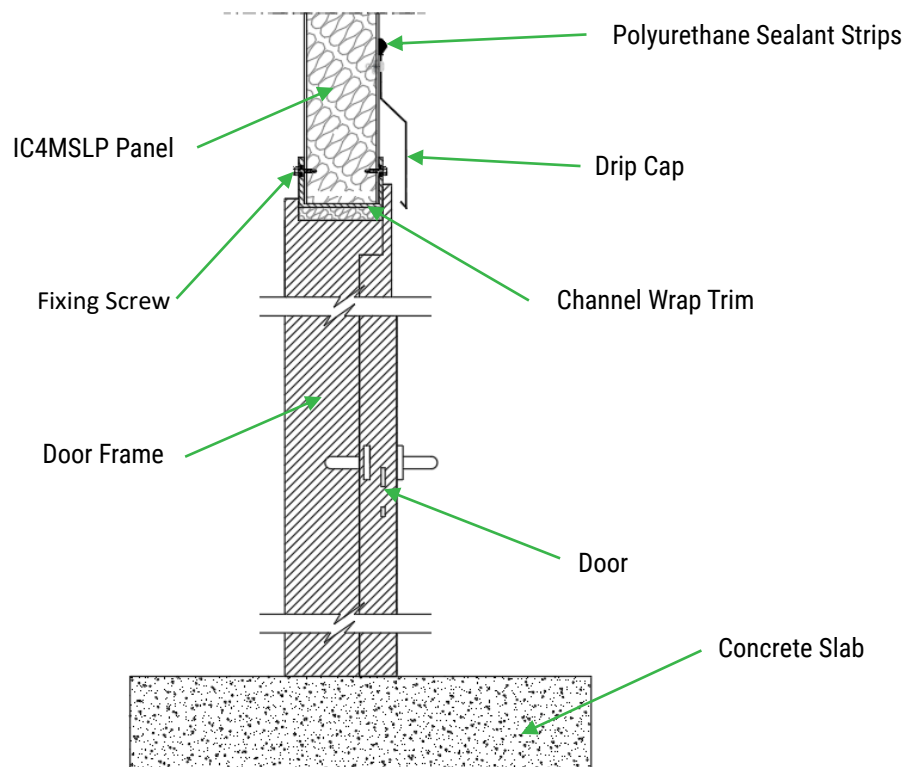
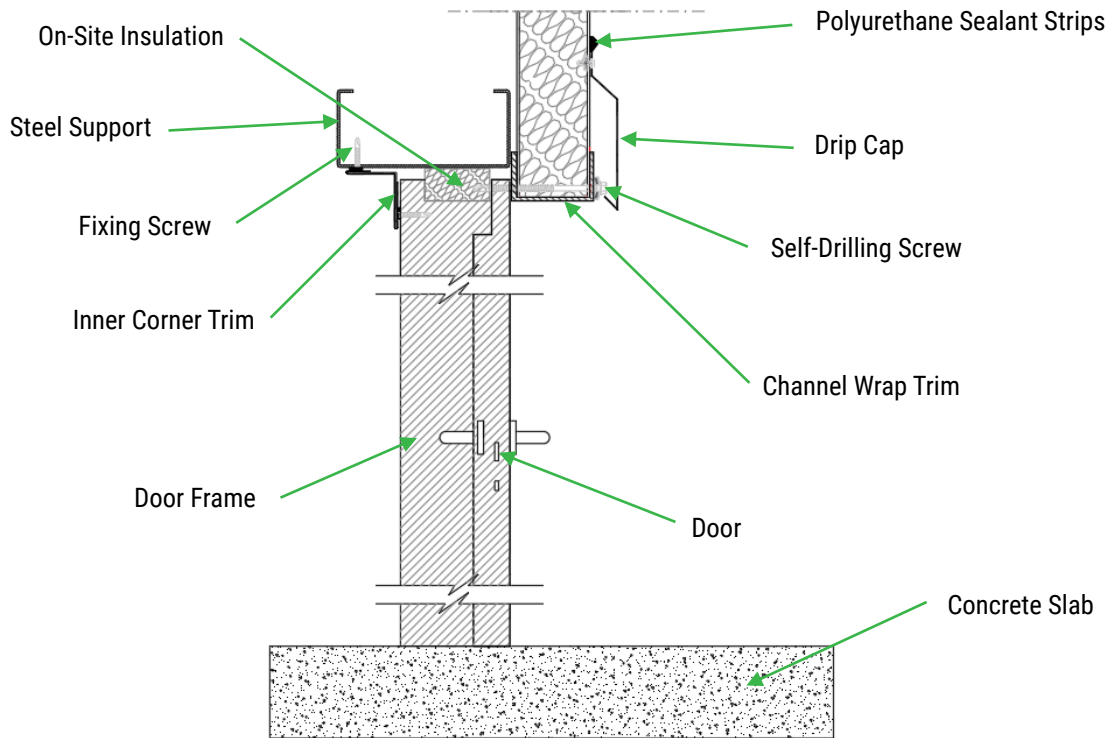
DETAILS OF WALL SLABBING





CORNER WALL DETAILS







INSTALLATION DETAILS OF CASEMENT WINDOWS

